

Here is your copy of the April 1, 2018 PRS Newsletter!

The logo for Pacific Rim Sculptors features a white stylized arch above the text "Pacific Rim Sculptors" in a white sans-serif font, all set against a solid blue rectangular background.

Pacific Rim Sculptors

From the Editor

Dear Charles Stinson,

Get ready for the **April 8 PRS meeting, Paella Pot-luck and Engineering talk**, hosted by **Eileen Fitz-Faulker**. This will be an exciting event! (This event is open to dues-paying regular and student members and their guests.)

PRS is migrating to an all-new website with lots of member-only features, including a call-for-entry calendar, your own albums to post photographs of your sculptures, and much, much more!

Now let's change the world for better through our art!
Best regards,

Charles H. Stinson
Newsletter Editor

PS: Your Newsletter Editor will take a vacation break and not publish a June newsletter, so the usually thin July newsletter will be extra full!

News from PRS Areas

San Francisco:

The opening reception for ***Room for Thought*** at SPACE 151 was a well-attended celebration of PRS's first exhibition in many years in San Francisco. Visit it, and plan to attend the "April 28 IS-Day Celebration and Pot-luck Hors D'oeuvres Closing Reception", which will include brief artists' talks (organized by Area Coordinators **Dale Eastman, Catherine Merrill & Charles Stinson**). [See exhibition details here.](#)

San Francisco PRS members resume Second Thursday art visits to SFMOMA and nearby venues Thursday April 12, 2018.

East Bay & Northern California:

The PRS members-only call-for-entry for ***Forms & Sequences*** has gone out. The

The PRS members only call for entry for *Ingenuity* has gone out. The exhibition, organized by Area Coordinator **Leitha Thrall**, will be at the Siskiyou Arts Museum this August. [See details here.](#)

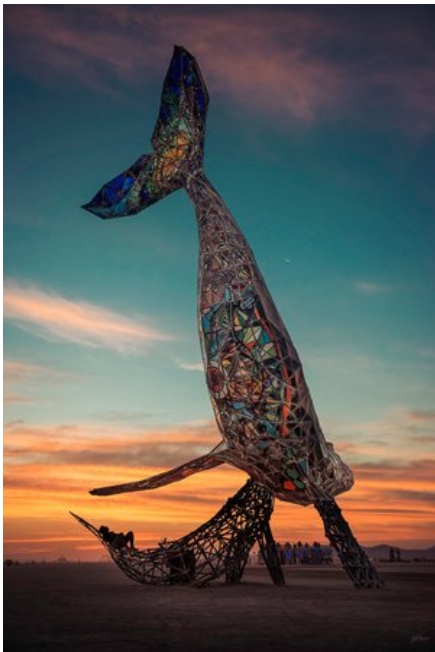
Marin:

The national call-for-entry for *Ingenuity* has gone out. The exhibition, organized by the Marin Society of Artists in partnership with Area Coordinator **Peter Keresztury** on behalf of PRS will be this October. [See details here.](#)

Humboldt County:

Lori Goodman is thinking of ways for sculptors in the Humboldt County area to meet, socialize, and brainstorm exciting new sculpture possibilities (contact Lori at LoriGoodman@icloud.com).

April 8 PRS Meeting, Paella Potluck & Art Engineering Talk

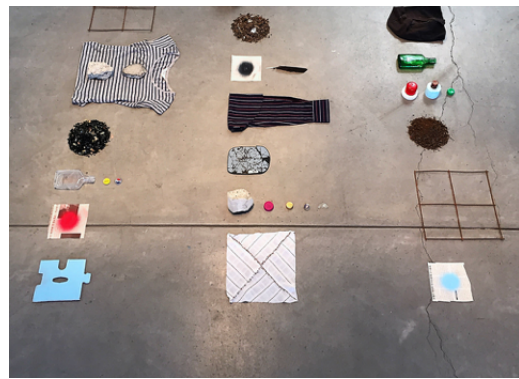
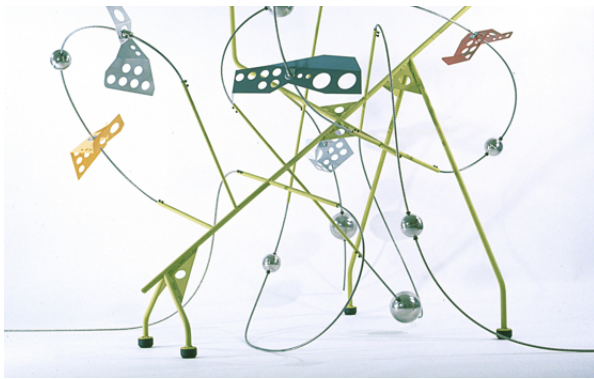


Guest speakers at the upcoming April 8 PRS meeting will be **Alireza Lahijanian** and **Selinda Martinez** of Rbhu Engineering, which specializes in creative engineering solutions. They strongly believe in artistic expression and its value in enhancing human experience and inspiring others about new possibilities. They especially love engineering sculptures, and have engineered solutions for major works at Burning Man and elsewhere. They will give a presentation to PRS members and will respond to questions submitted in advance. The event is for dues-paying PRS members (who receive emailed invitations) and their guests; advance registration is required. Paella is provided by host **Eileen Fitz-Faulkner**, but registrants are asked to contribute to the potluck. *Registration is limited, so don't delay!*

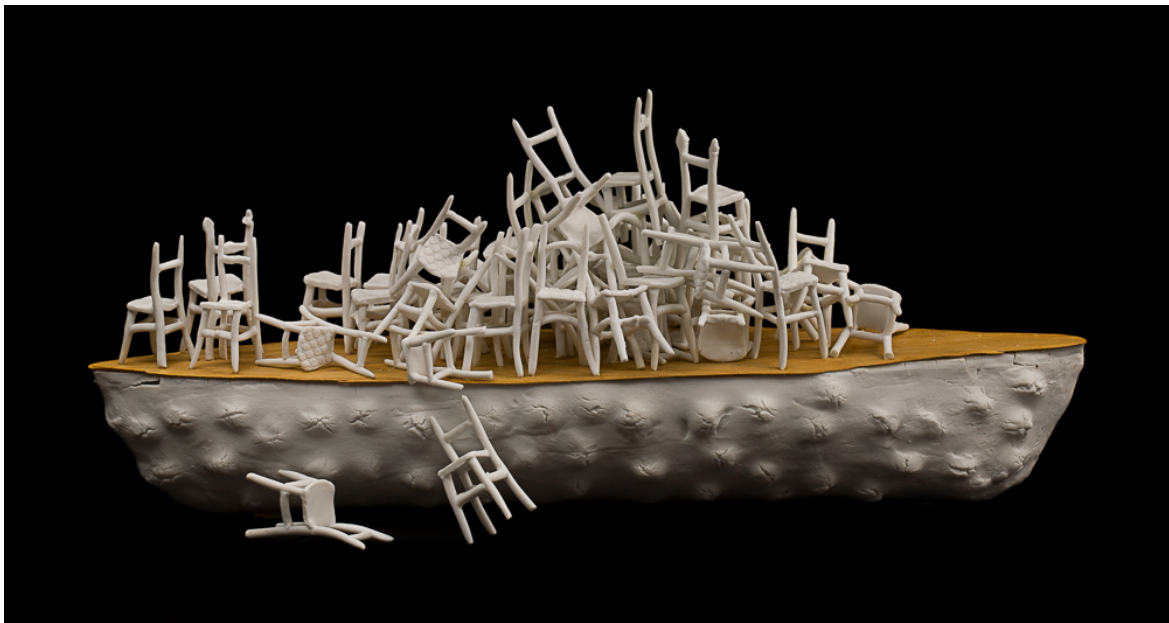
Member News

The exhibition *Room for Thought* at SPACE 151 in San Francisco includes works by seventeen Bay Area sculptors selected by juror **Jack Fischer**, who said, "My main idea when curating / judging a show . . . is driven by the thought: is this work going to remain a mystery? . . . Will I remain curious about it?" (see more [information about the exhibition at this link](#).) Included are works by **Walter Bruszewskids** (below left), **Kathleen King** (below right),

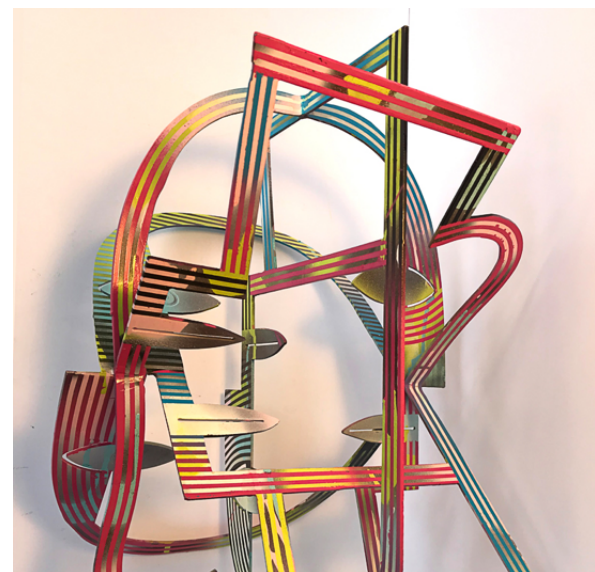




Maru Hoeber (below),



Magels Landet (below left), Richard Downs (below right),





Oleg Lobykin (below left), **Jann Nunn** (below right),



Teddy Milder (below left), **Laura Van Duren** (below right),



Ruth Tabancay (below left), **Charles Stinson** (below right),

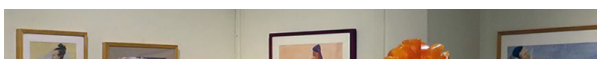




Diana Mihalakis, whose piece "Lessons Not Learned" (below) Jack Fischer selected as best of show, and who receives one-year memberships in both PRS and ISC, donated by Ross Levy, Principal of Levy Art + Architecture and SPACE 151.



Also selected for inclusion in *Room for Thought* were Nancy Brown, Elicia Epstein, Annette Goodfriend, Amanda Klimek, Gregory Roberts, and Laura Van Duren.



Stephanie Metz will teach a workshop April 22-29th at the *California Sculptors*



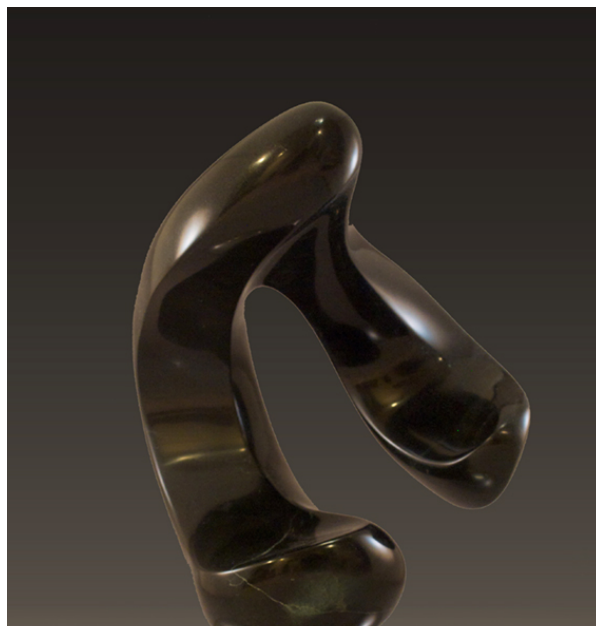
Symposium at Camp Ocean Pines in Cambria, California. Stephanie will demonstrate her techniques for forming wool into free-standing sculpture using simple tools. (See more information [here](#) or [here](#), or email Stephanie directly at stephaniegmetz@gmail.com).

Rene Dayan-Whitehead's carved stone sculptures (image left) were featured at the Dolphin Gallery in Gualala, CA.

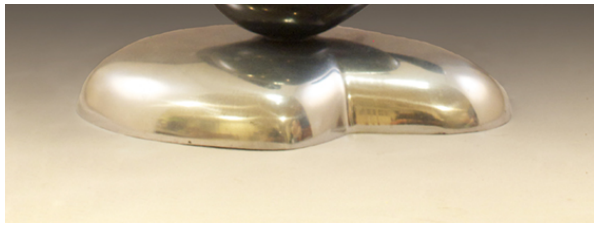
Eric Saint Georges (image right) and **Oleg Lobykin** (image below) will be participating in this year's **San Francisco stARTup Art Fair** April 27-29, 2018 ([See information about stARTup at this link](#)).



Marina Smelik's sculpture "Liminal Balance" (image right) will be on display at the Harrington Gallery in Pleasanton, CA, April 28 through June 2, 2018 as a part of the 8th



annual **Fresh Works** juried exhibition ([see information here](#)).



Marina's sculpture "Calla Lily" (image below left) was selected to be in the 2018 **Spring Open Juried Show** at the Falkirk Cultural Center in San Rafael, CA from March 23 through April 26, 2018 ([see information here](#)), and her ceramic sculpture "enLIGHTened lace" (image below right) will be in the 2018 **City of Santa Clara Indoor Sculpture Exhibition** ([see information here](#)).



Crocker Art Museum presented the late PRS member **Cyrus Tilton's** *The Cycle*, which opened March 25, 2018, including the Museum's acquisition, "Lovers" (image right).

The most viewed PRS member artworks in ISC's Digital Chapter Exhibition at Zona Maco Mexico 2018 included **Ann Belden's** "Deliver us from Evil" (2017), **Jan Nunn's** "Rachidial Digression, (2011), and **Kathleen King's** "Arguing with Success, in 3 parts", (2017).



Peter Keresztury's sculpture "Golden Gate Bridge"



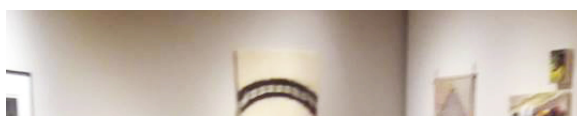
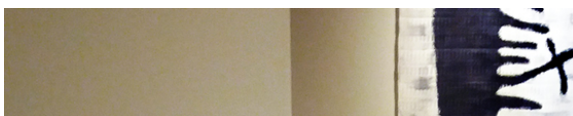
(below left) was selected as a semi-finalist for the *City of Santa Clara Cultural Commission's Sculpture Exhibition*. The piece will be on display at the Santa Clara City Hall from April 7 to June 15, 2018. Peter recently completed two new kinetic wind sculptures (image right and below right), which are exhibited on his front lawn along with others in his collection. His studio will be open the weekends of May 5-6 and May 12-13 for Marin Open Studios, and will feature his landscape photography and sculptures.



Joseph Slusky's works (below) are in 900 Grayson Cafe / Gallery in Berkeley, CA.



Barbara Stevens Strauss (below left) and **Kristin Lindseth** (below right) have works in the exhibition *Nordic Voyage: A Sense of Place* at Harrington Gallery in Pleasanton, CA.





Leslie Plato Smith had works in the recent exhibition *Circumstance: Social Justice* (image left) at the June Steingart Gallery, Laney College, Oakland, CA.

Jann Nunn will be featured in *Metamorphosis* at ARC Gallery, April-May, 2018. Check out the attractive [online catalog here](#).

ISC News

Participate in **International Sculpture Day ("IS-Day") Saturday April 28, 2018**: Join a group show, open your studio, demonstrate a technique, give an artist talk, lead a tour of public art or of a museum's sculpture collection.

It is easy to register your event on the ISC's website calendar (sculpture.org); promote your event and raise public appreciation of sculpture as an important art form! [More information is available here](#).

Check out the ISC Website Sculpture.org member resources; add photos of your works annually for review by collectors, gallerists, curators, and corporate buyers. Also check out the *Insider* section of *Sculpture* magazine.

Welcome New Members

Oceana Rain Stuart of Mill Valley, CA, creates bronze sculptures and teaches workshops at her atelier in Sausalito, CA. Check out her website at www.OceanaRainStuart.com.

Sara Lisch of San Pablo, CA, creates sculptures of ceramics and fabric. Check out her website at www.SaraLisch.com.

Stephanie Robison of Oakland, CA, creates sculptures of fabric, stone, wood, and polymer clay, and teaches sculpture at City College of San Francisco. Check out her website at www.StephanieRobison.com.

Members: Invite sculptor colleagues to join Pacific Rim Sculptors and get one month free membership for each new member (cannot previously have been a member). Just ask the new member to mention your name when filling out the "How did you hear about us?" field in the application form.

Membership in PRS & ISC

Membership in Pacific Rim Sculptors also requires joining the International Sculpture Center (www.sculpture.org), our parent organization, with 20% discount off ISC membership (enter "PRS" as the Chapter Code). For more information [click here](#).

Participate in PRS

Donate:

PRS is a 501(c)3 non-profit organization, so your donations are tax deductible; use EIN # 81-0919806 for tax reporting purposes. [Click here to make a donation](#).

Volunteer:

Offer your interests and skills: volunteers@pacrimsculptors.org.

Contribute to the Newsletter:

[Click here](#) to send brief articles, reviews of shows, ideas for future newsletters; include clear photographs, if possible!

Contribute to the Website:

Send suggestions to [Website Suggestions](#).

Communicate to all PRS Membership:

Messages sent to pacrimsculptors@googlegroups.com will be sent to the whole group

Messages sent to prsmiscaptions@googlegroups.com will be sent to the whole group after review by moderators to avoid spam and inappropriate messages. The moderator may suggest alternate distribution for the message (e.g., newsletter, or message from our Administrator).

Participate with our Facebook Page:

Sign up for our new Facebook page: simply [visit this link](#) and click once on the "Join Group" button on the right hand side of the page. An Administrator will authorize your request, usually within 1-2 work days. Then start posting!

Your Area Coordinators

PRS shows & events are organized by member volunteers working in small groups. Connect with your area coordinator to suggest and to help plan shows & events:

South Bay:

[Bette Linderman](#)

[David Trousdale](#)

Santa Cruz:

[Rosy Penhallow](#)

[Cynthia Siegel](#)

Marin:

[Peter Keresztury](#)

San Francisco:

[Dale Eastman](#)

[Catherine Merrill](#)

[Charles Stinson](#)

East Bay:

[Eileen Fitz-Faulkner](#)

[Leitha Thrall](#)

[Jann Nunn](#)